

SOFTWARE MANUAL FOR DRAWYOURWAY WEB APPLICATION

Overview

The "DrawYourWay" application is a creative platform designed to let users share their ideas and drawings through a feed-based interface. This guide will walk you through the steps to install the application as a **Progressive Web Application (PWA)** on your iPad, iPhone or Android and provide an overview of its features.

Installing the Application as a PWA

Prerequisites

- An iPad or iPhone running iOS 11.3 or later; an Android device with Android 5.0 (Lollipop) or later.
- Safari browser (default on iOS devices), Google Chrome, Microsoft Edge, Firefox or Samsung Internet.

Steps to Install

1. Open the Application URL

Launch Safari on your iPad or iPhone or other browser mentioned above and navigate to the web application URL (e.g., <https://drawyourway.com>).

2. Access the Share Menu

Once the application loads, tap the Share button (a square with an upward arrow) located at the bottom of the Safari browser or the three dots button on other browsers;

3. Add to Home Screen

In the Share menu, scroll down and select **Add to Home Screen**.

4. Confirm Installation

A preview screen will appear showing the app name ("DrawYourWay") and its icon. Tap **Add** in the top-right corner.

5. Launch the Application

The app will now appear on your home screen like a native app. Tap the icon to launch the application.

SOFTWARE MANUAL FOR DRAWYOURWAY WEB APPLICATION

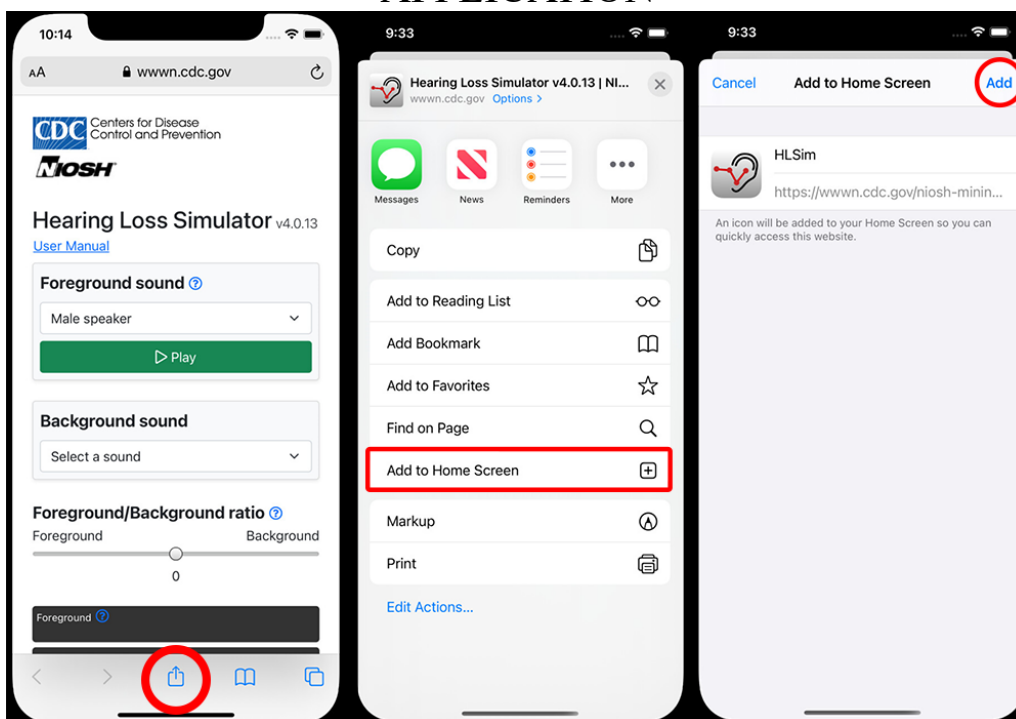


Figure 1. Screenshots showing PWA installation steps on iOS [1]

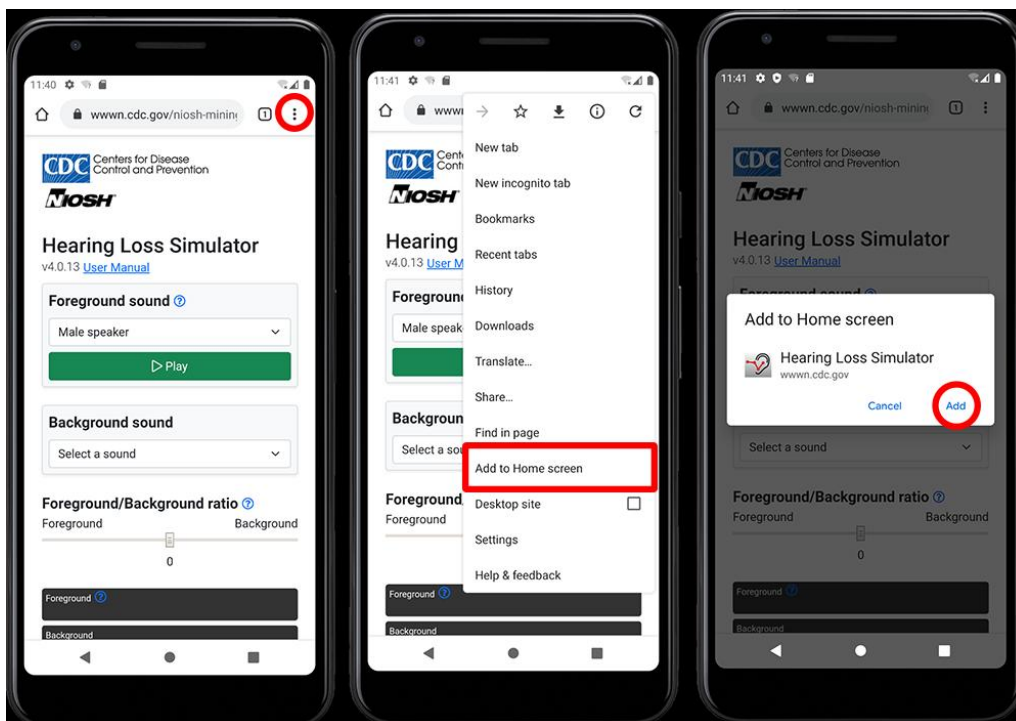


Figure 2. Screenshots showing PWA installation steps on Android [1]

SOFTWARE MANUAL FOR DRAWYOURWAY WEB APPLICATION

Using the "Draw Your Way" Application

Log in screen

When the users open the application, they'll be greeted with the "**DrawYourWay**" **login in screen** (if they are not already logged in) . The main features include:

- Text boxes to enter the credentials;
- A "**Log in**" button to send the credentials to be verified by the database;
- A hyperlink that redirects users to create an account;
- A hyperlink that redirects users to the forgot password page.

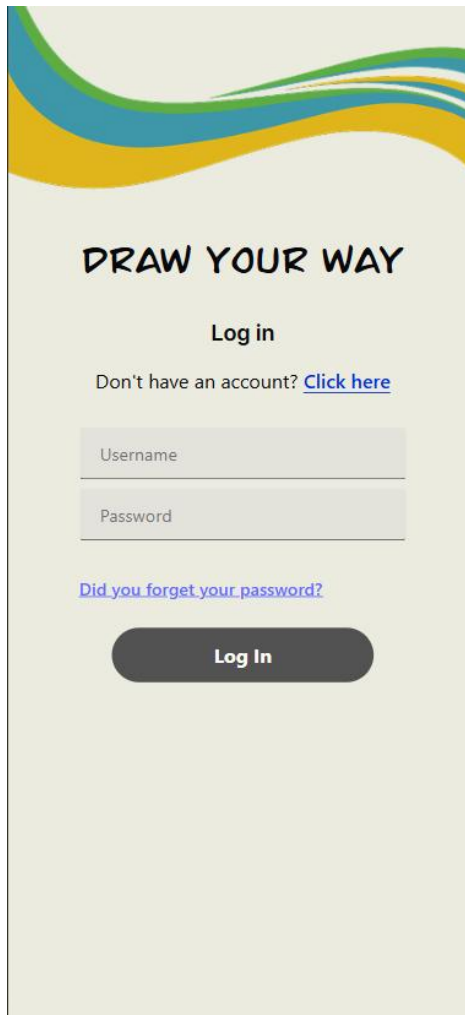
The image shows a mobile application login screen for "DRAW YOUR WAY". At the top, there is a decorative header with wavy lines in blue, green, and yellow. Below this, the text "DRAW YOUR WAY" is displayed in a bold, black, sans-serif font. Underneath the title, the words "Log in" are centered. A line of text follows: "Don't have an account? [Click here](#)". Below this text are two input fields: the first is labeled "Username" and the second is labeled "Password". Both fields have a light gray background and a thin border. Below the password field, there is a blue hyperlink that reads "Did you forget your password?". At the bottom of the form area, there is a dark gray, rounded rectangular button with the text "Log In" in white.

Figure 3. Log in screen

SOFTWARE MANUAL FOR DRAWYOURWAY WEB APPLICATION

Create an account screen

If users don't have an account, they can make one on the **Create an account page**. This page includes:

- Text boxes to enter the credentials;
- A “Sign up” button to send the credentials to the database;
- A hyperlink that redirects users that have an account to log in;

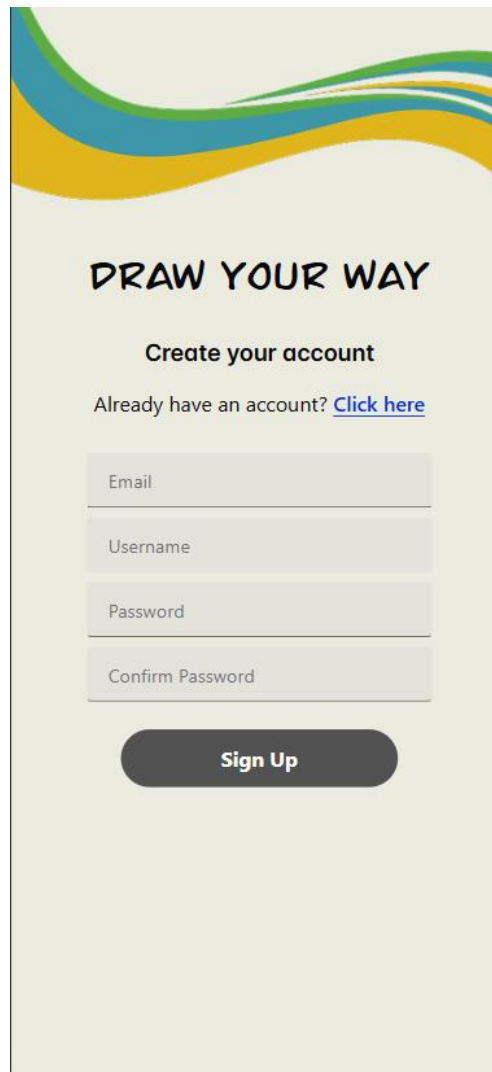
The image shows a web application interface for creating an account. At the top, there is a decorative header with wavy lines in blue, green, and yellow. Below this, the text "DRAW YOUR WAY" is displayed in a bold, black, sans-serif font. Underneath, the heading "Create your account" is centered. A link "Already have an account? [Click here](#)" is positioned below the heading. There are four text input fields stacked vertically, labeled "Email", "Username", "Password", and "Confirm Password". At the bottom of the form is a dark grey, rounded rectangular button with the text "Sign Up" in white.

Figure 4. Create an account screen

SOFTWARE MANUAL FOR DRAWYOURWAY WEB APPLICATION

Forgot password screen

If users forgot their password, they can reset it using the **Forgot password page**. This page includes:

- Text box to enter the email associated with the account;
- A “Send code” button to send the password reset code via email;
- A hyperlink that redirects the users to the login screen.

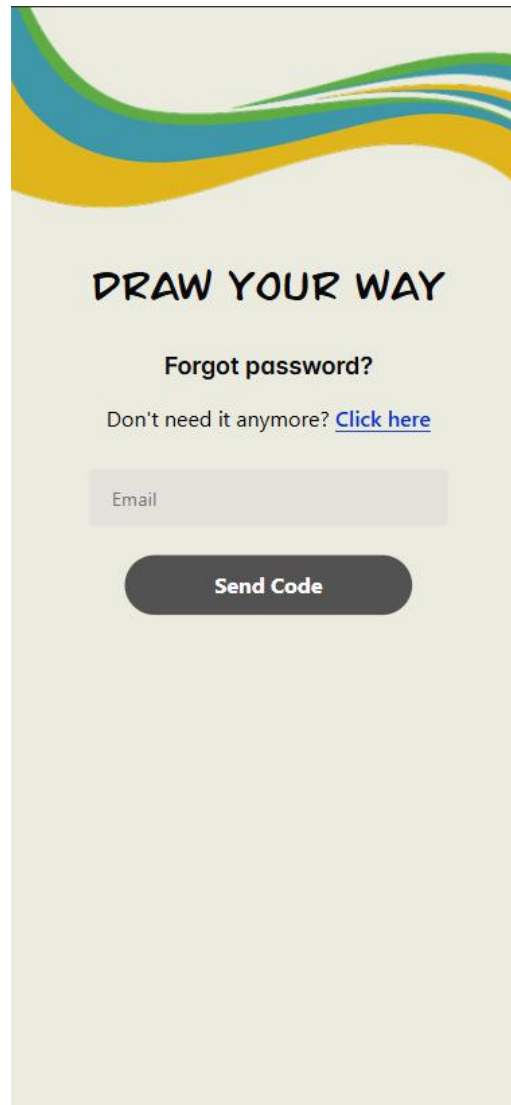


Figure 5. Forgot password screen

SOFTWARE MANUAL FOR DRAWYOURWAY WEB APPLICATION

Drawing screen

After successfully logged in, the user can create art using the **Drawing screen**. This page includes:

- Drawing box with features such as changing pen type, pen's color and an eraser;
- A submit button to send the drawing to the database.



Figure 6. Drawing screen

[1] How to Install a PWA, available at <https://www.cdc.gov/niosh/mining/tools/installpwa.html>, accessed on 15.05.2025.